



Fáilte fáilte fáilte folks -
beimid réidh tosú ag 7:30

Gaelscoil na Lochanna



**P.O. Seán Ó Cearnaigh
Múinteoir Deirdre
Barra de Róiste**

Múinteoir Daithí (GCCD)

FÁILTE



#Nalochanna, www.gaelscoilnalochanna/facebook

www.gaelscoilnalochanna.com

www.gsnl.info

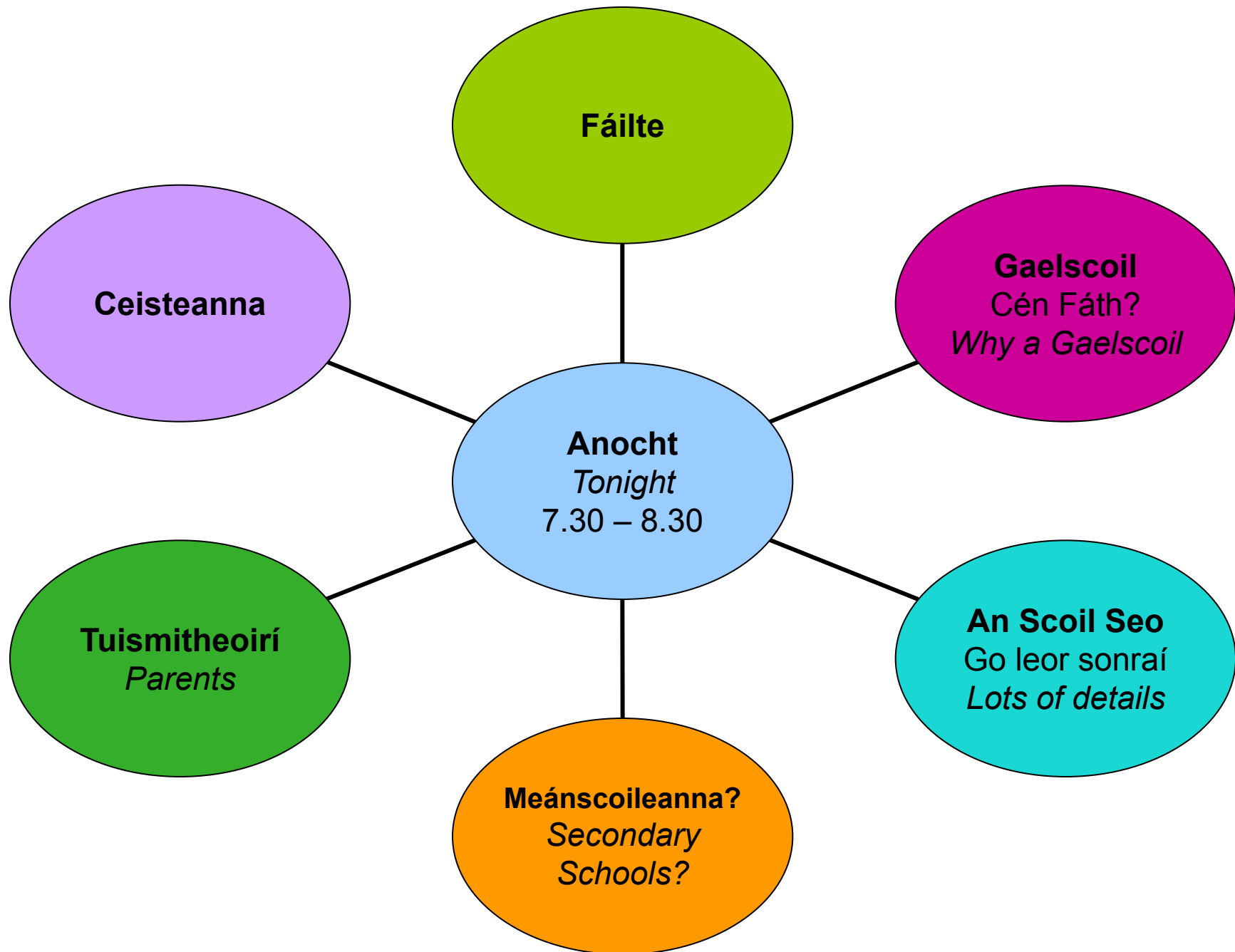
priomhoide@gaelscoilnalochanna.com

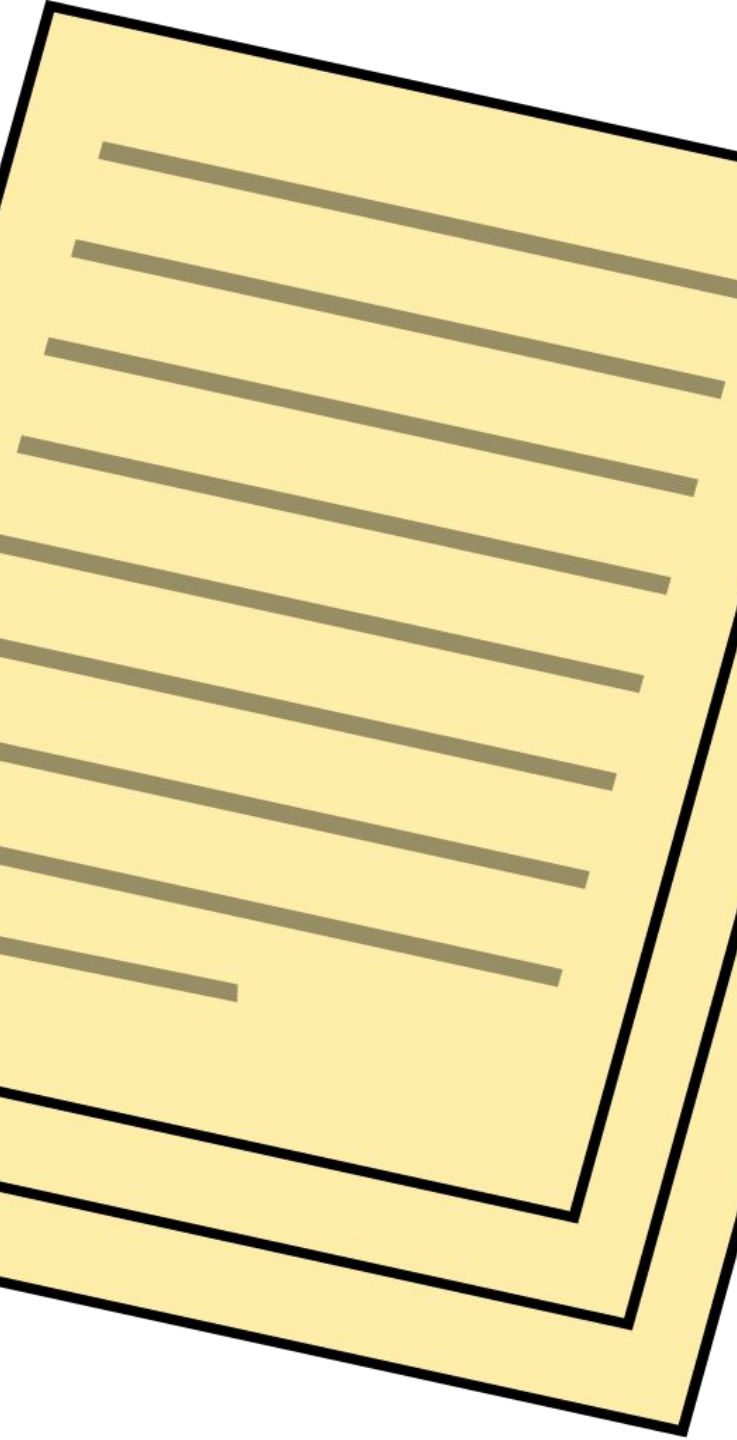
runai@gaelscoilnalochanna.com

087-9388651

045-900525







- **Foirm Chlárúcháin (Enrolment form)**
- **Eolas ar Rialú um Chosaint Sonraí (Info on GDPR)**
- **Foirm Glacadh le Polasaithe- (Acceptance of school policies)**

An Próiseas Clárúcháin
Enrolment Process

Eanáir - 21 lá
(14- 3 Feabhra)

Bealtaine - May

Meitheamh - June

Meán Fómhair-
September

2006- 17 páiste
2021- 200 páiste
2029- 400?





Foras Patrúnachta



Bord Bainistíochta



Scoil

Cé mhéad Gaelscoileanna sa tír?

Bunscoileanna-

8.1 % (c. 45,000)

almost 1 in 12 chn receiving
ed through Irish

Wicklow- 6 Gaelscoileanna

Kildare- 7 Gaelscoileanna

Gaelscoil

Cén fáth?

(why choose a/ our Gaelscoil?)



www.gsnl.info



WHY SHOULD I CHOOSE THIS SCHOOL?

Academic: Children in Gaelscoileanna achieve higher results in English & Maths in the National Standardised tests. In addition to being fluent in Irish, children will acquire their 3rd/4th language much easier.



Cognitive: Bilingual children are better problem solvers and have increased understanding of maths concepts and more creative thinking.

Communication: Children in Gaelscoileanna have better communication skills thanks to their early immersion in another language.



Cultural: Children in Gaelscoileanna gain a deeper appreciation of the value of different cultures. Research shows this results in greater tolerance and less racism. Everyone is welcome.

Self-esteem: Children in Gaelscoileanna gain a deeper appreciation of their culture leading to increased self-esteem, sense of identity and are happier attending school than children in other forms of education.



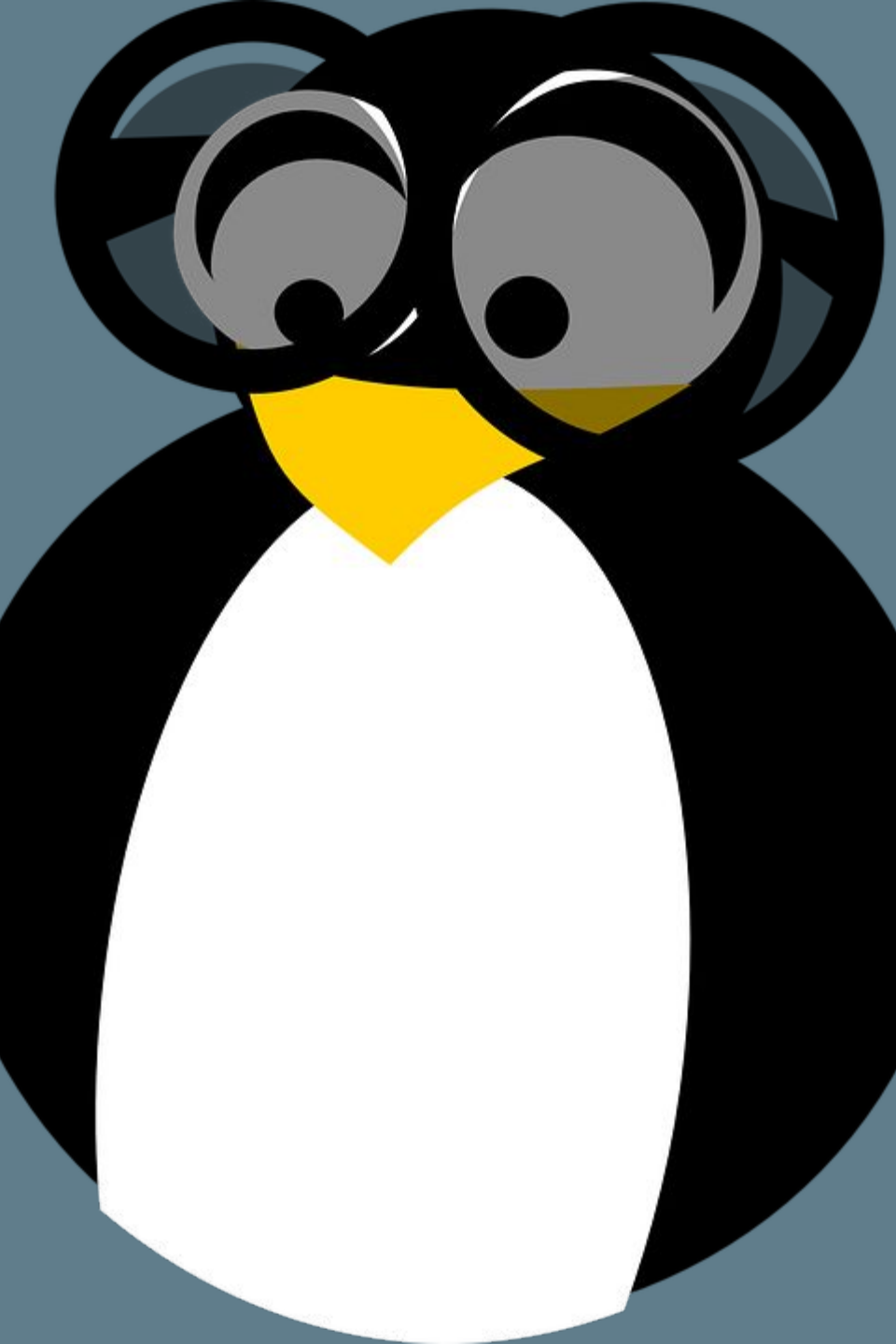
Employment: Ability to work in more than one language is a valued skill. Children in Gaelscoileanna have extra opportunities from their fluency in Irish & other languages.

**See www.foras.ie for academic sources.*



- Cognitive advantages and greater academic success
- Easier to learn additional languages
- Literacy skills transfer with greater ease from a minority language to a majority language
- Better communication skills, more creativity and sensitivity to communication
- Children/pupils gain a deeper appreciation of their culture
- Students in Irish-medium schools have higher achievement in both English and Maths than their peer groups in English-medium schools.

Bilingual education for children with SEN ‘does no harm and clearly does contribute to social, emotional and interpersonal growth’ – NCSE Report, 2011



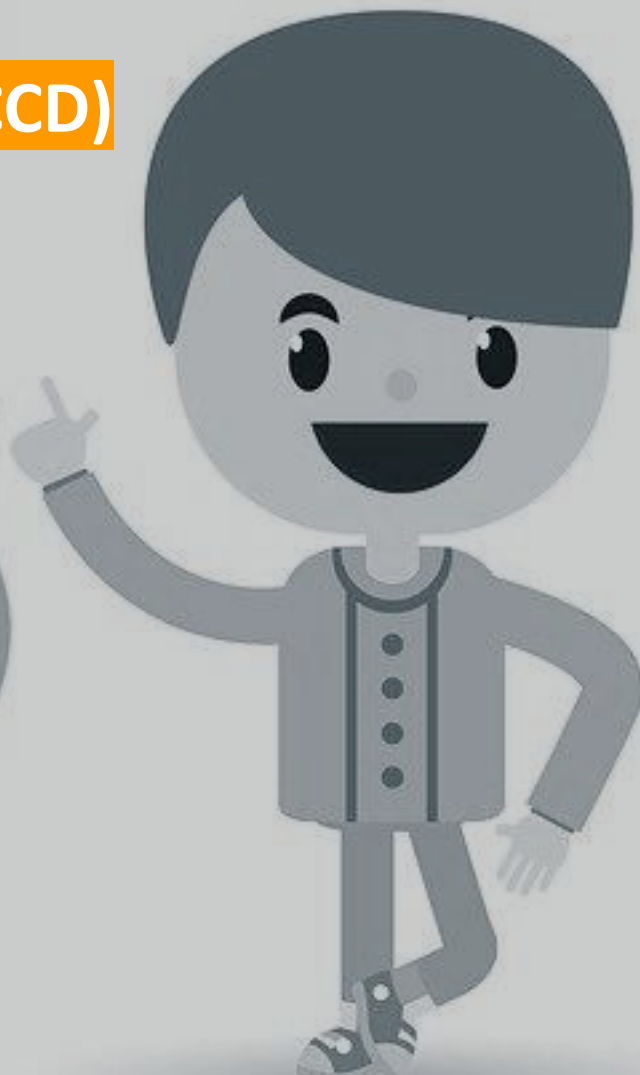
Research shows
that **bilingualism**
can delay the
onset of
Alzheimer's by
up to 4 years!

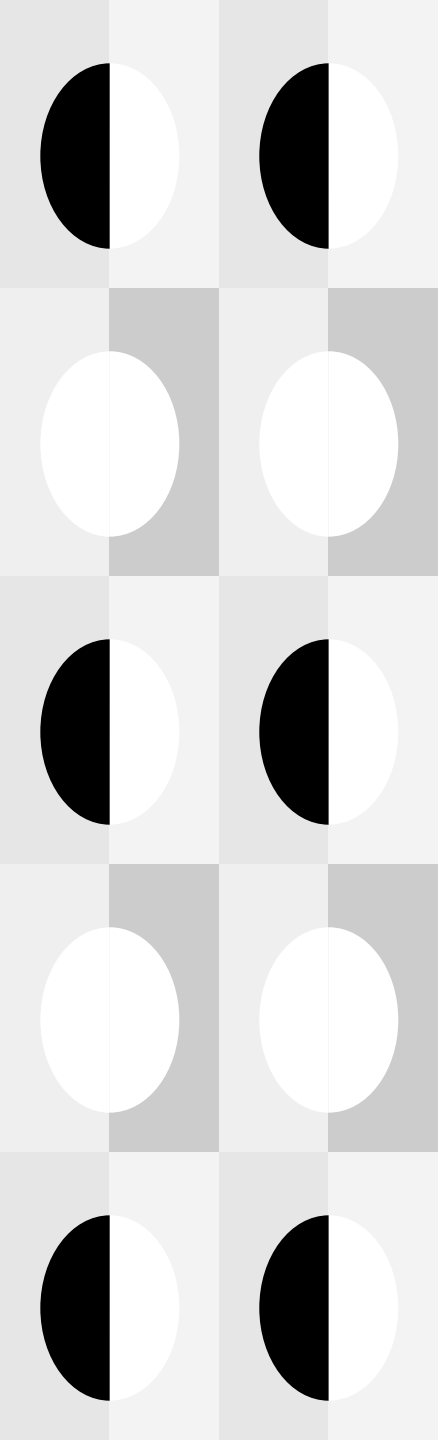
GAELOIDEACHAS



Barra

Daithí (GCCD)





Spóirt sa scoil

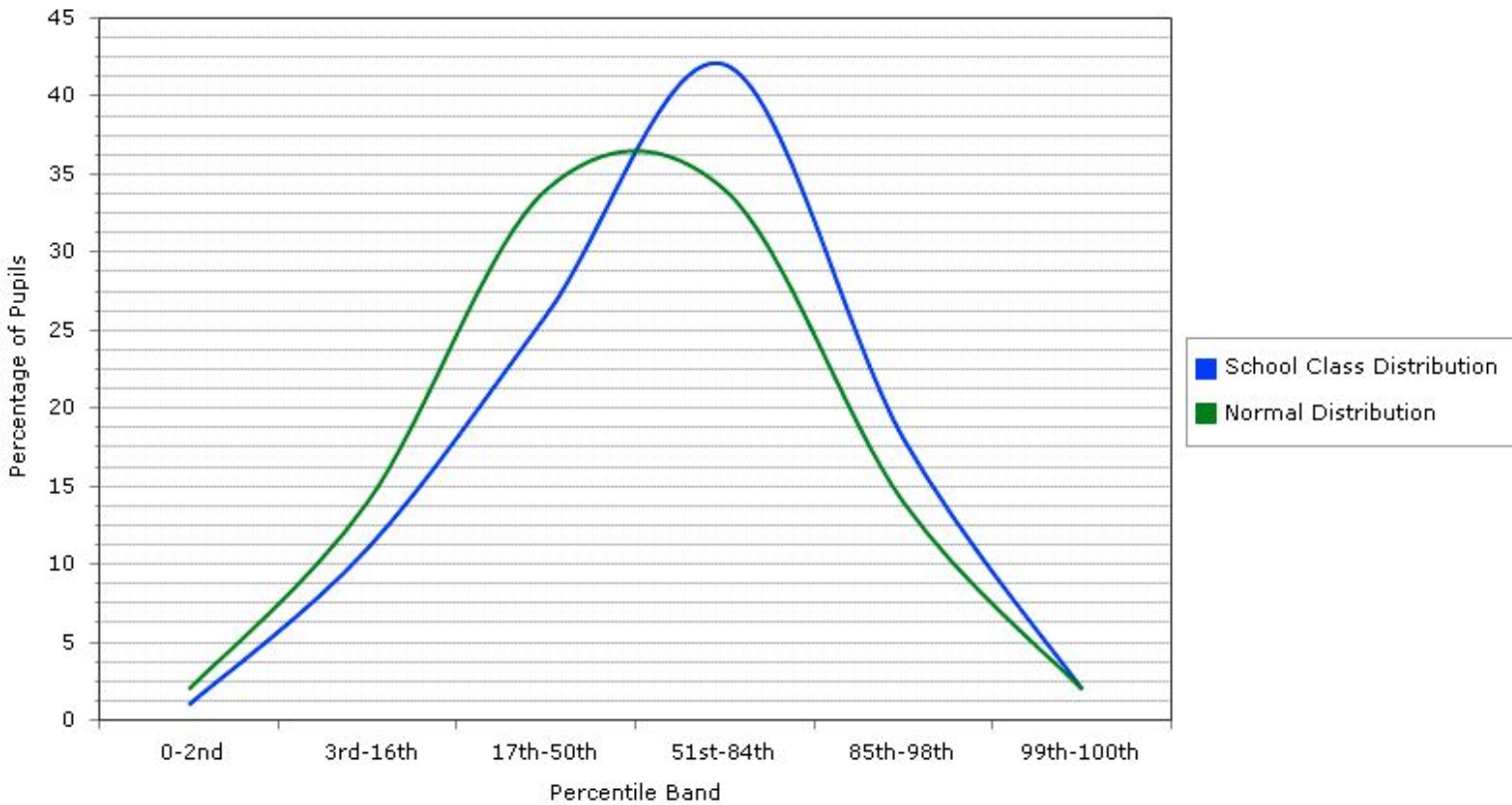
Ranganna larscoile sa scoil

Foghlaim Digiteach sa Scoil

Erasmus sa scoil



Whole School MICRA-T Comparison with National Norms



Percentile Band	School Class Distribution
0-2nd	1
3rd-16th	11
17th-50th	26
51st-84th	42
85th-98th	18
99th-100th	2

Idircreidmheach / Interdenominational



Bratach Scoile Ghníomhaí



Active School Flag

Suíomh na Scoile / Site / Buildings

2020 – 2021
16 Seomraí



Tumoideachais

***Immersion
education***

Am Oscailte /
Opening Times

8.45 – 1.25

Obairbhaile

- *Parental concerns*



AISTEAR



Tacaíocht Foghlama /
Learning Support

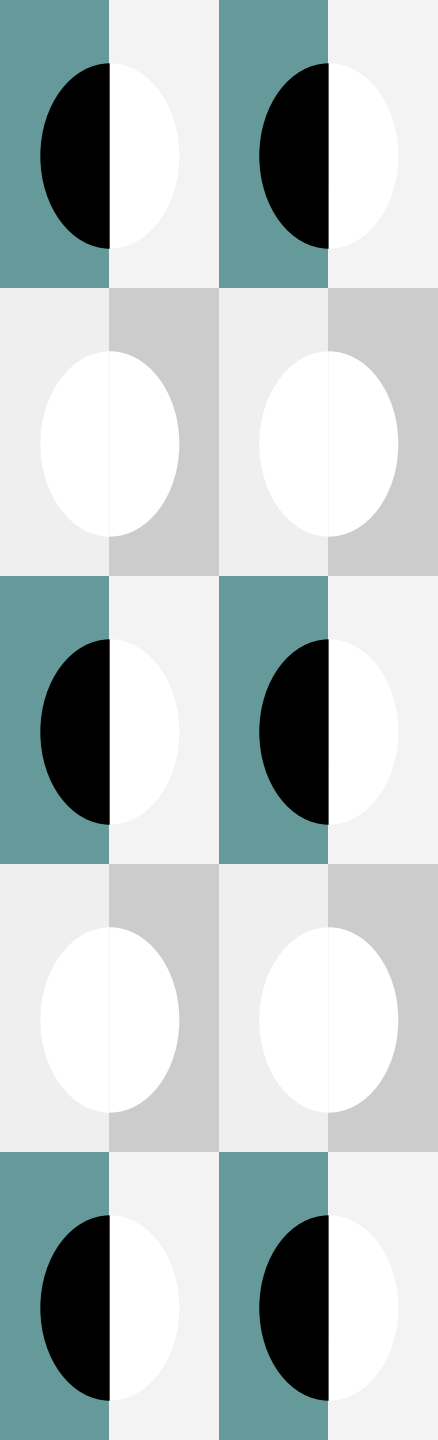
(Dyslexia, Dyspraxia etc)



Cur chuige Aisiríoch
Restorative Practice

● Polasaí Iontrála

- Íos aois (minimum age)
- 31 NB (max)
- 26 ag lorg áit (8 mball clainne)
- 10 Lá

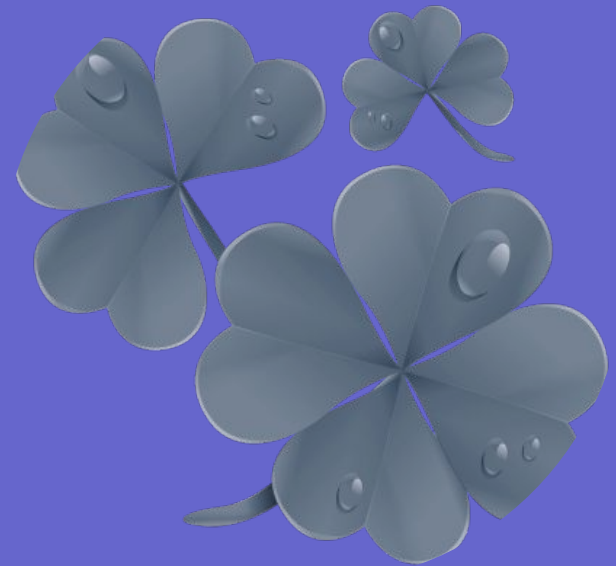


1. Brothers, sisters, half-siblings, foster or adopted siblings of children who currently attend the school.
2. Children for whom the school is satisfied that the child has attained a level of fluency in Irish and that this fluency is likely to decline if he / she is not admitted to an all-Irish school. *
3. Children who have a brother, sister, half sibling, foster or adopted sibling who have previously attended the school.
4. By age; the oldest child first.

Rialú Ghinearálta um Chosaint Sonraí / G.D.P.R.

Seachtain na Gaeilge

Márta



GAELCHULTÚR- 10
weeks from 1 Feb
(sample 23rd January)

eolas@gaelchultur.com



A decorative border made of repeating pink triangles with white outlines, arranged in a larger triangular pattern.

Gaeilge sa bhaile



Ceisteanna?
Questions?



#Nalochanna, www.gaelscoilnalochanna/facebook

www.gaelscoilnalochanna.com

www.gsnl.info

priomhoide@gaelscoilnalochanna.com

runai@gaelscoilnalochanna.com

087-9388651

045-900525





Gaelscoil na Lochanna